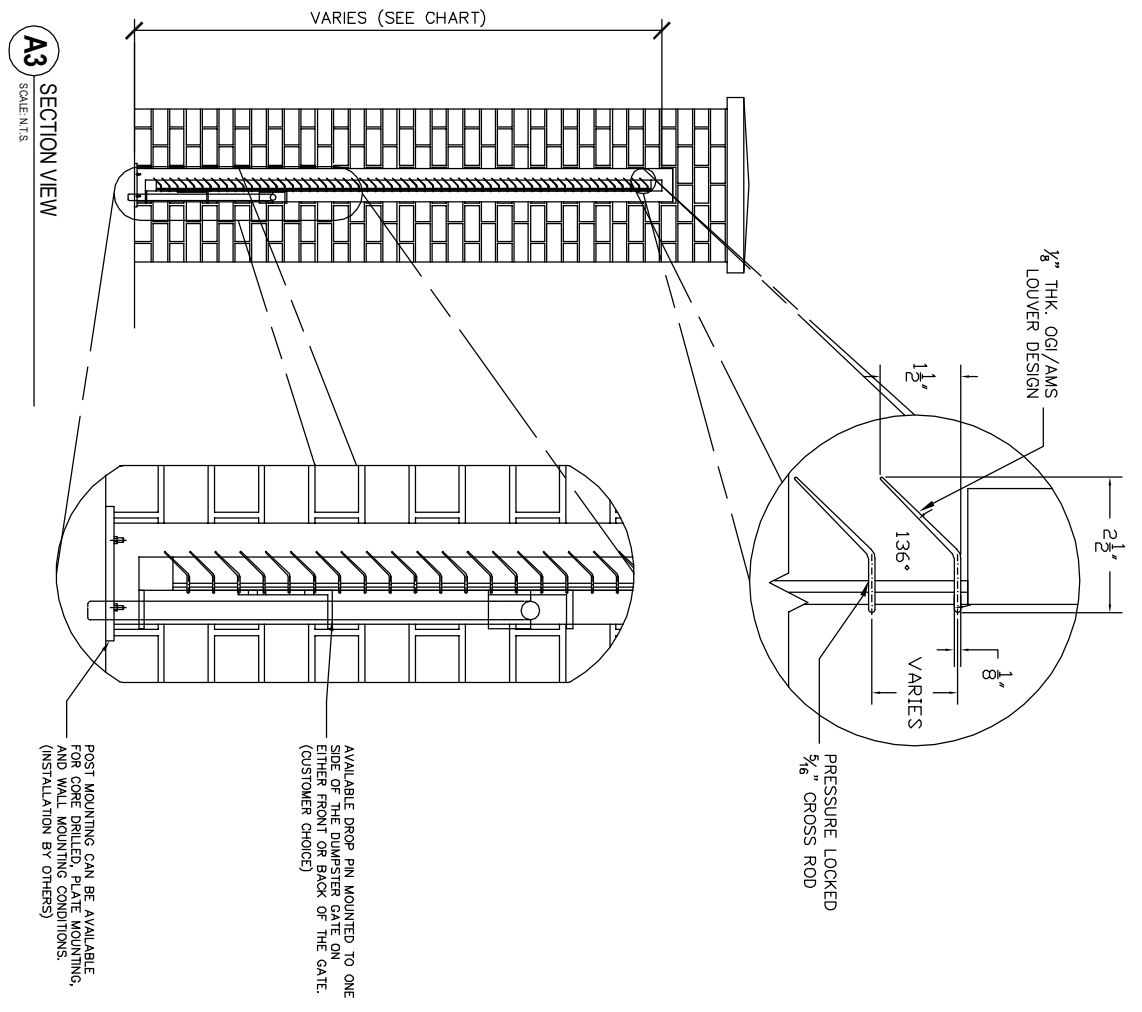


MAX PANEL	TYPE	LG-100	LG-75	LG-60
		<p>1/2" DIA. x .564 TH. ALUMINUM TUBE & 1/2" DIA. CROSSBAR STUB 1/2" ON CENTER</p>	<p>3/4" DIA. x .564 TH. ALUMINUM TUBE & 1/2" DIA. CROSSBAR STUB 1/2" ON CENTER</p>	<p>7/8" DIA. x .564 TH. ALUMINUM TUBE & 1/2" DIA. CROSSBAR STUB 1/2" ON CENTER</p>



- GENERAL NOTES:**
- 1.) DUMPSTER GATES COME IN VARIOUS SIZES. (SEE PANEL CHART) FOR SIZES.
 - 2.) FINISHES AVAILABLE: POWDER COAT, MILL, ANODIZED.
 - 3.) CAN PROVIDE ENGINEERED CALCULATIONS TO MEET CITY CODE REQUIREMENTS.
 - 4.) CURRENTLY ONLY AVAILABLE IN ALUMINUM, BUT IN VARIOUS ALLOYS TO MEET YOUR SPECIFICATIONS.
 - 5.) FENCING PANELS ARE AVAILABLE AS AN ADDITIONAL OPTION.

** CONTACT YOUR LOCAL REP FOR PRICING TODAY! **

DUMPSTER ENCLOSURES	
SIZES AVAILABLE	
(2)	GATES @ 3'-0" x (6'-0" DR 8'-0")
(2)	GATES @ 4'-0" x (6'-0" DR 8'-0")
(2)	GATES @ 5'-0" x (6'-0" DR 8'-0")
(2)	GATES @ 6'-0" x (6'-0" DR 8'-0")

OHIO GRATINGS, Inc.

an Ohio Gratings Company

OGI Architectural Metal Solutions

5299 Southway Street SouthWest
Canton, Ohio 44706
Phone: 800.321.9800 Fax: 330.479.3074 www.ohiogratings.com

CUSTOMER:	JOB NAME:
LOCATION:	DATE: 9/3/2010
FINISH:	SCALE: N.T.S.
MATERIAL: OGI-AMS LG SERIES DUMPSTER ENCLOSURES	NOTES:
AMS NO.:	REV:
OGI NO.:	
DWG. NO.:	SHEET: 1 of 1