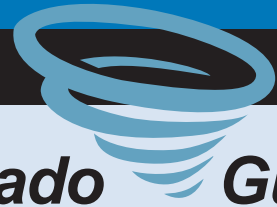


Tornado Guard

Steel Louver System



Tornado Guard

Features & Benefits:

- Manufactured using heavy duty carbon steel plates and channels to provide a louver that can withstand 300 mph winds and 100 mph impacts.
- Panel sizes up to 8' wide and 12' high
- Can be fabricated into asymmetrical shapes, doors or hatches.
- Carbon steel louvers are available in mill finish, hot-dip galvanized, powder coated or with other specialty finishes.
- Provides 50% open area for air flow and 100% visual block.
- Meets LEED requirements for MR4.2 (20% recycled content)
- Made in USA

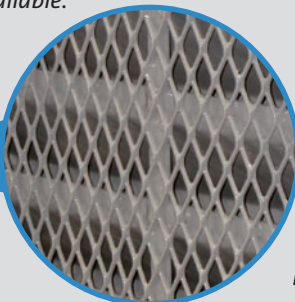


Ohio Gratings is proud to introduce *TornadoGuard*, a steel louver system designed and tested to meet the requirements of **FEMA 361** for tornado shelters or other similar applications.

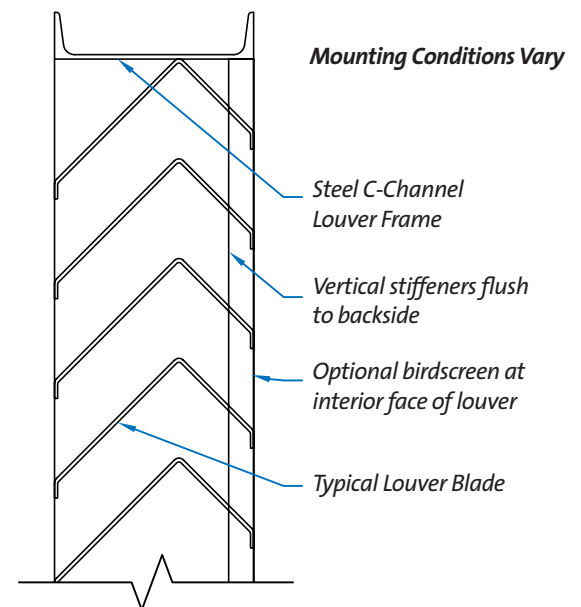


Front

A galvanized steel or stainless steel birdscreen is also available.



Back



OGI Architectural Metal Solutions
an Ohio Gratings Company

5299 Southway Street SW ■ Canton, OH 44706 ■ www.ohiogratings.com

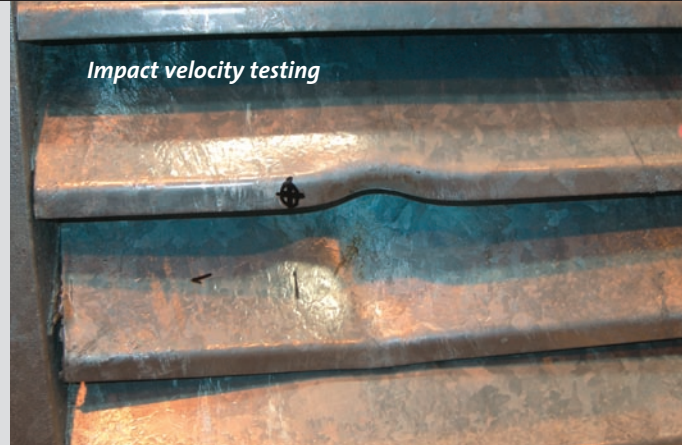
1-800-321-9800 ■ Fax 330-477-7872

Tornado Guard

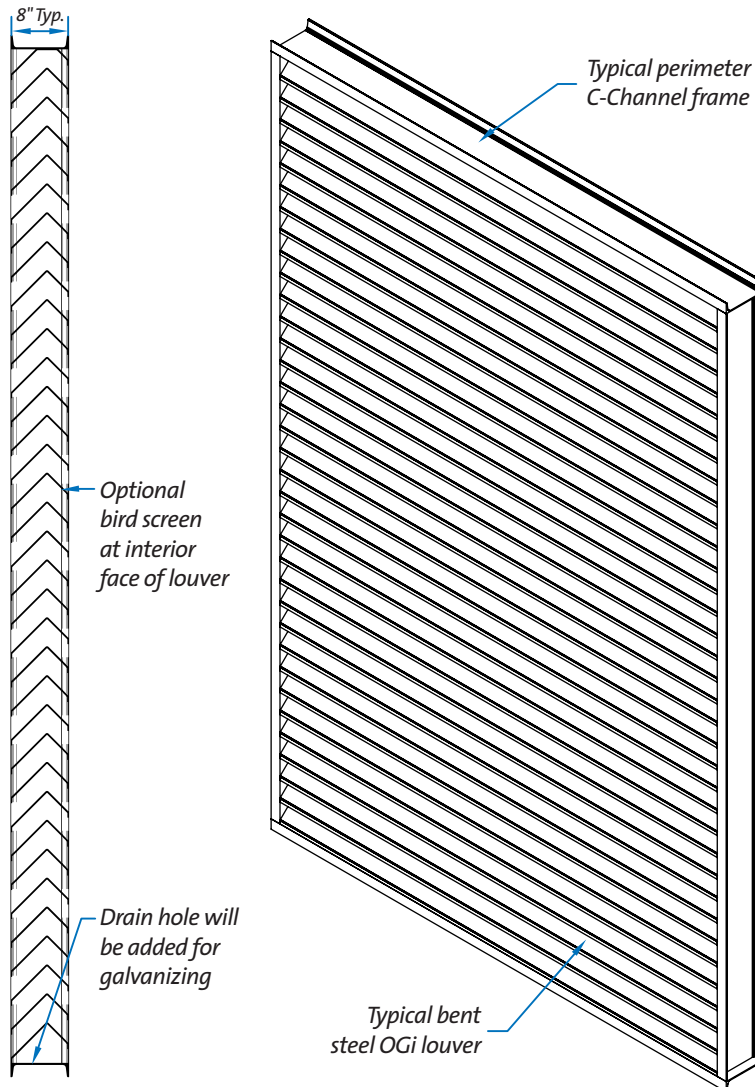
Steel Louver System

Test Requirements:

All parts of the building envelope must be able to withstand the impact from wind-borne debris. **FEMA 361** Section 3.4.2 (C) states that openings in tornado safe rooms must meet the requirements of ICC-500. Section 305.1.1 of ICC-500 states all components of the shelter envelope must resist the impact from a 15 pound (6.8kg) sawn lumber 2 x 4.



Section & Perspective Views:



The impact velocity varies with the design wind speed. The maximum design wind speed of 250 MPH was used, which results in an impact velocity of 67 MPH on horizontal surfaces and 100 MPH on vertical surfaces. An initial velocity of 100 MPH was used in this testing.



General Notes:

- Manufacturing tolerance $\pm 1/4"$, unless otherwise noted
- Attachment method varies, available per request
- Test reports are available upon request



OGi Architectural Metal Solutions
an Ohio Gratings Company

5299 Southway Street SW ■ Canton, OH 44706 ■ www.ohiogratings.com

1-800-321-9800 ■ Fax 330-477-7872